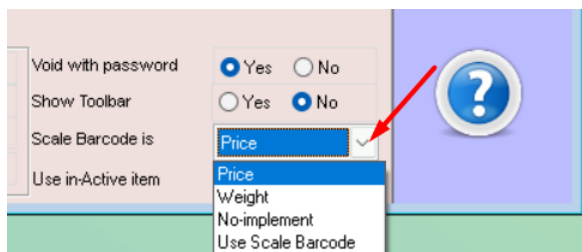
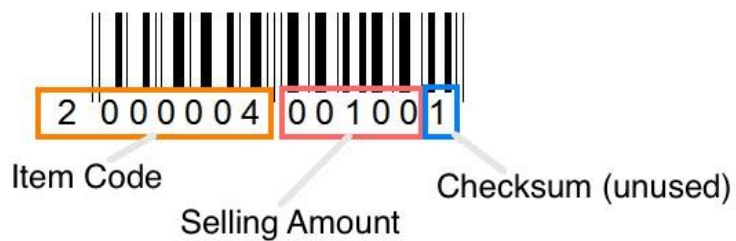


Quick guide of Weighting scale integration



1. Enable Scale feature at setting , Others Tab.

Sample:



Checksum is used to error prevention, we just ignore it.

Key in item code. (MAKE SURE IS 7 DIGIT NUMERIC ONLY)

The 'Stock Item' window has a search bar with 'Code [F3]' and a text input containing '200004'. Below the search bar is a 'New Stock Item' button. A modal dialog box is open in the center with the text 'Stock Code not found! Add it?' and two buttons: 'Yes' and 'No'. At the bottom of the main window are 'Save', 'Cancel', and 'Close' buttons.

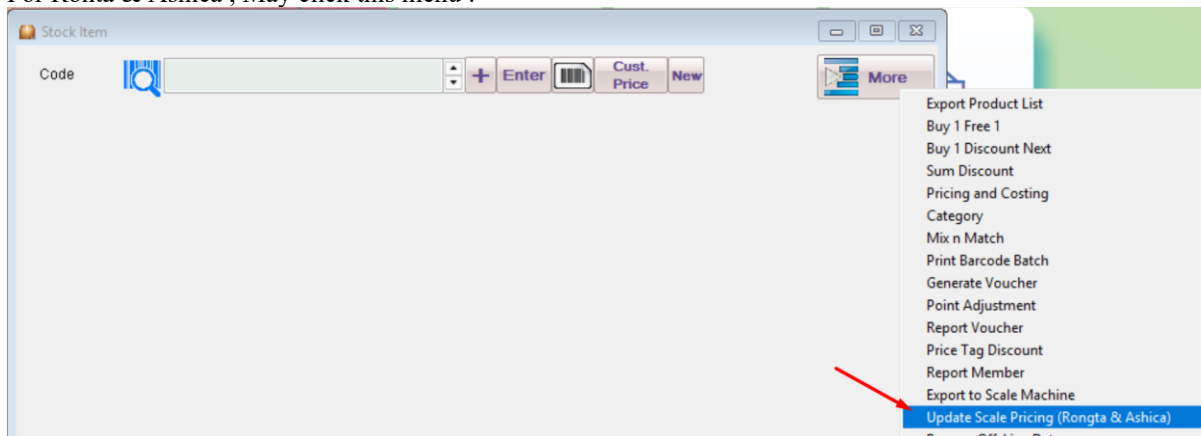
The 'Stock Item' window shows the following details: Search by 'Code [F3]' with '200004'. 'New Stock Item' button. Stock Group: 'ACC' (dropdown), 'ACCESSORIES' (dropdown). Description: 'MEMPAGA SEGAR'. Desc 2: (empty). Base UOM: 'UNIT'. Barcode: (empty). On the right, there are checkboxes: 'Stock Control' (checked), 'Active' (checked), 'Barcode with Price' (checked and circled in orange), and 'Price Revert Quantity' (checked and circled in orange).

Set to use 3 decimal point in pos system.

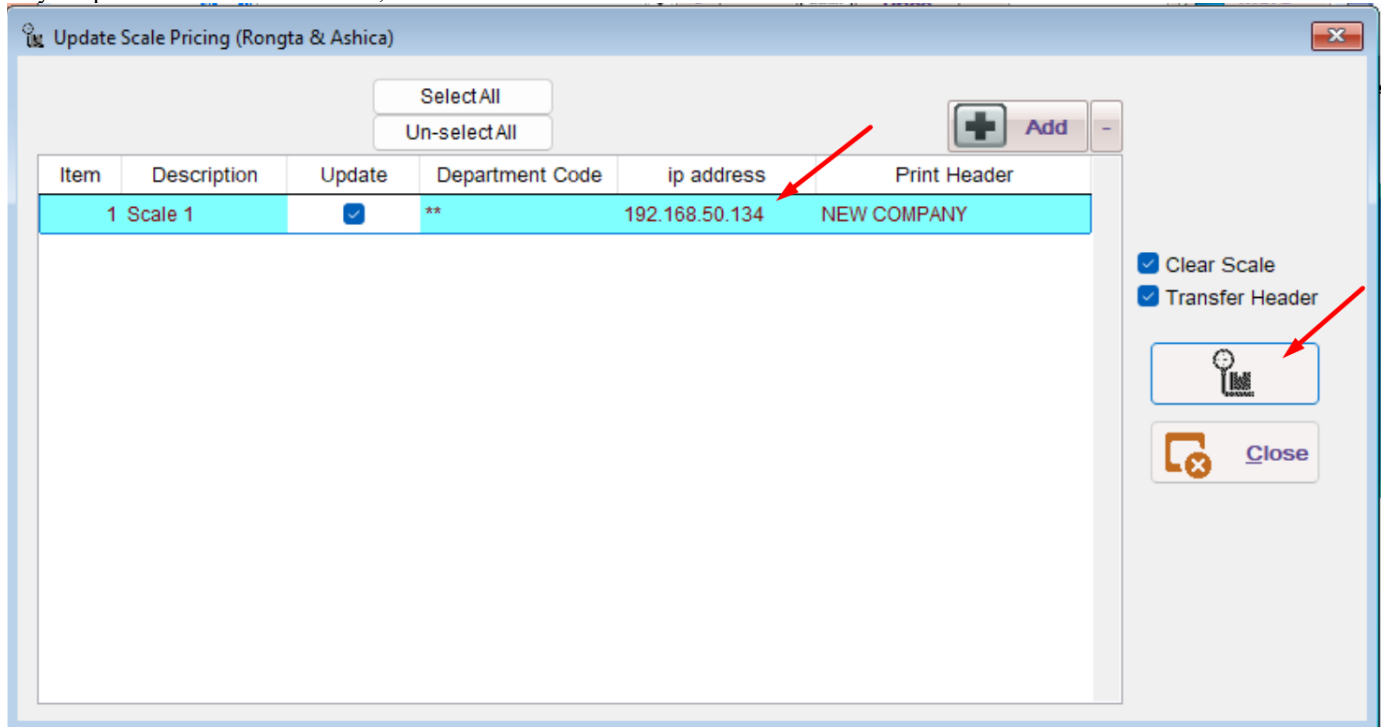
The 'Setting' window, 'System' tab, shows the 'Database : C:\USERS\PUBLIC\UNIPC'. The 'GST' section has 'Tax' set to 'None' and 'Price set in SQL are' set to 'Tax Inclusive'. The 'Decimal Points' section has 'Quantity' set to 3 (circled in orange), 'Price' set to 2, 'Cost' set to 2, and 'Amount' set to 2.

Direct update selling price to Scale Machine

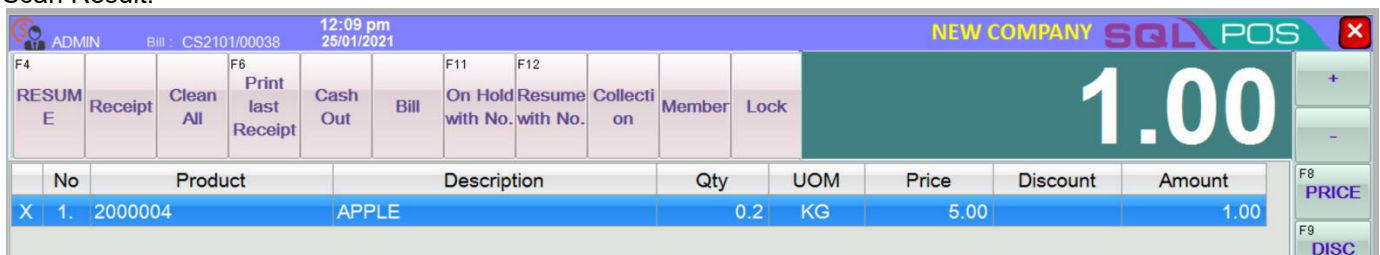
For Ronta & Ashica , May click this menu :



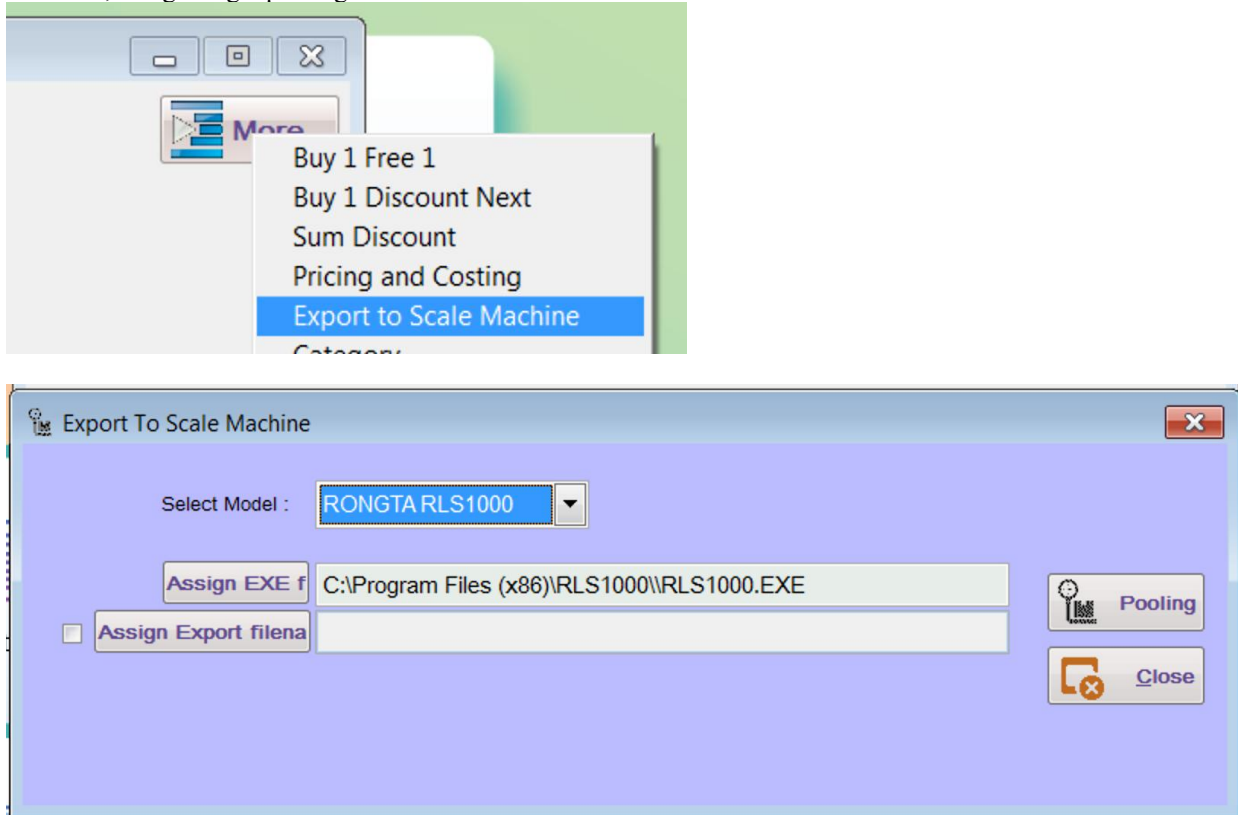
Key in ip address of scale machine, and click Scale Icon.



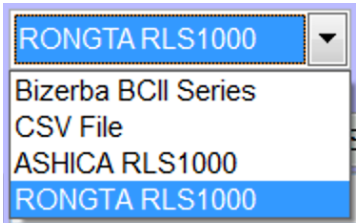
Scan Result:



Method 2, using Rongta pooling software.



Supported module.



The connection between pos and scale machine is thru network connection, scale machine will assigned fix ip.
The Polling software is provide by scale machine provider.



A Fill tool to assign scale barcode item code become barcode with price item.
Click [Fill] button as below.

☐ Copy Customer Outstanding Amount to ReferNo3

Fill Scale Items

Department

99

Code Length

☐ 6 Digit ☒ 7 Digit

☒ Barcode with Price

☒ Price Revert Quantity

Fill items which are match

Close

☐ Yes ☒ No

Always refresh items

☒ Yes ☐ No

☐ Yes ☒ No

Show price in UOM

☐ Yes ☐ No

☒ Yes ☐ No

Use Template

☐ Yes ☒ No

0001

Show Q.O.H.

☐ Yes ☒ No

Void with password

☒ Yes ☐ No

Show Toolbar

☐ Yes ☒ No

Scale Barcode is

Fill

Price

Use in-Active item

Yes

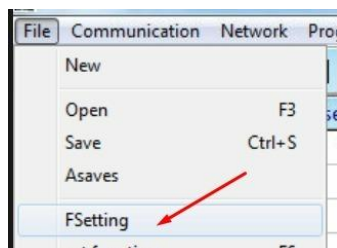
brow

Example : We going to export to file location : C:\SQL-POS\PLU\RTPLU_EN.TXP

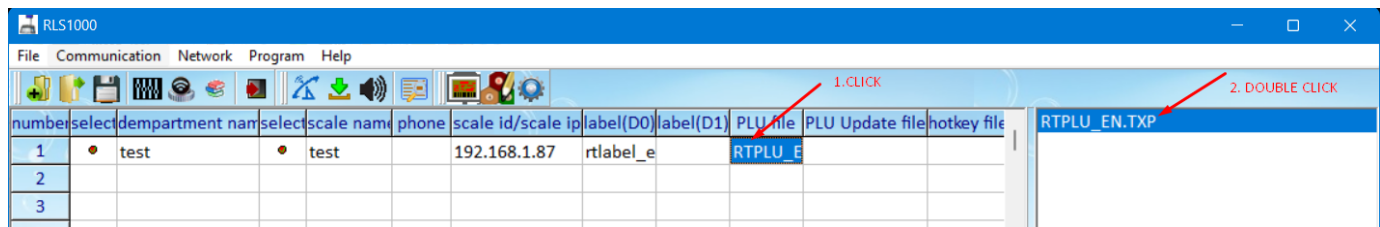
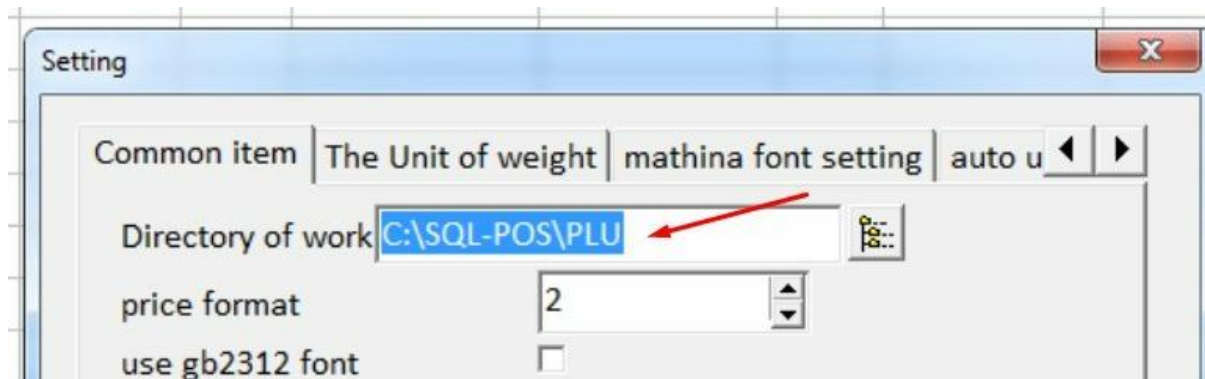


Click Button Pooling.

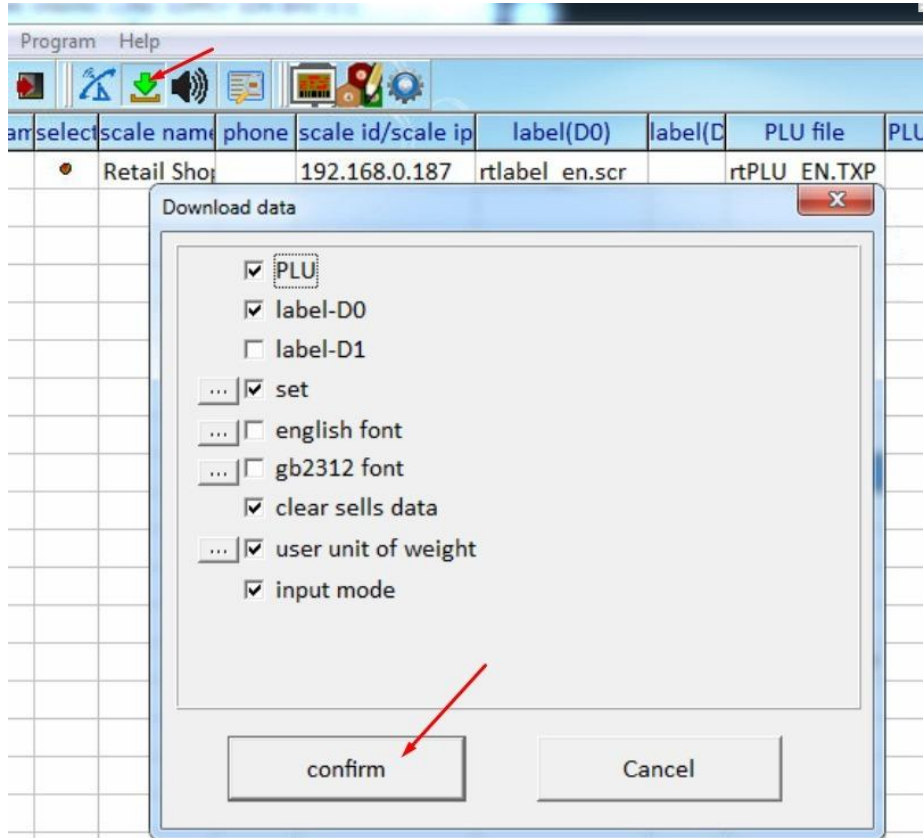
System will run the program C:\Program Files\RLS100\RLS1000.EXE
(Please make sure RONTA Pooling program is installed)



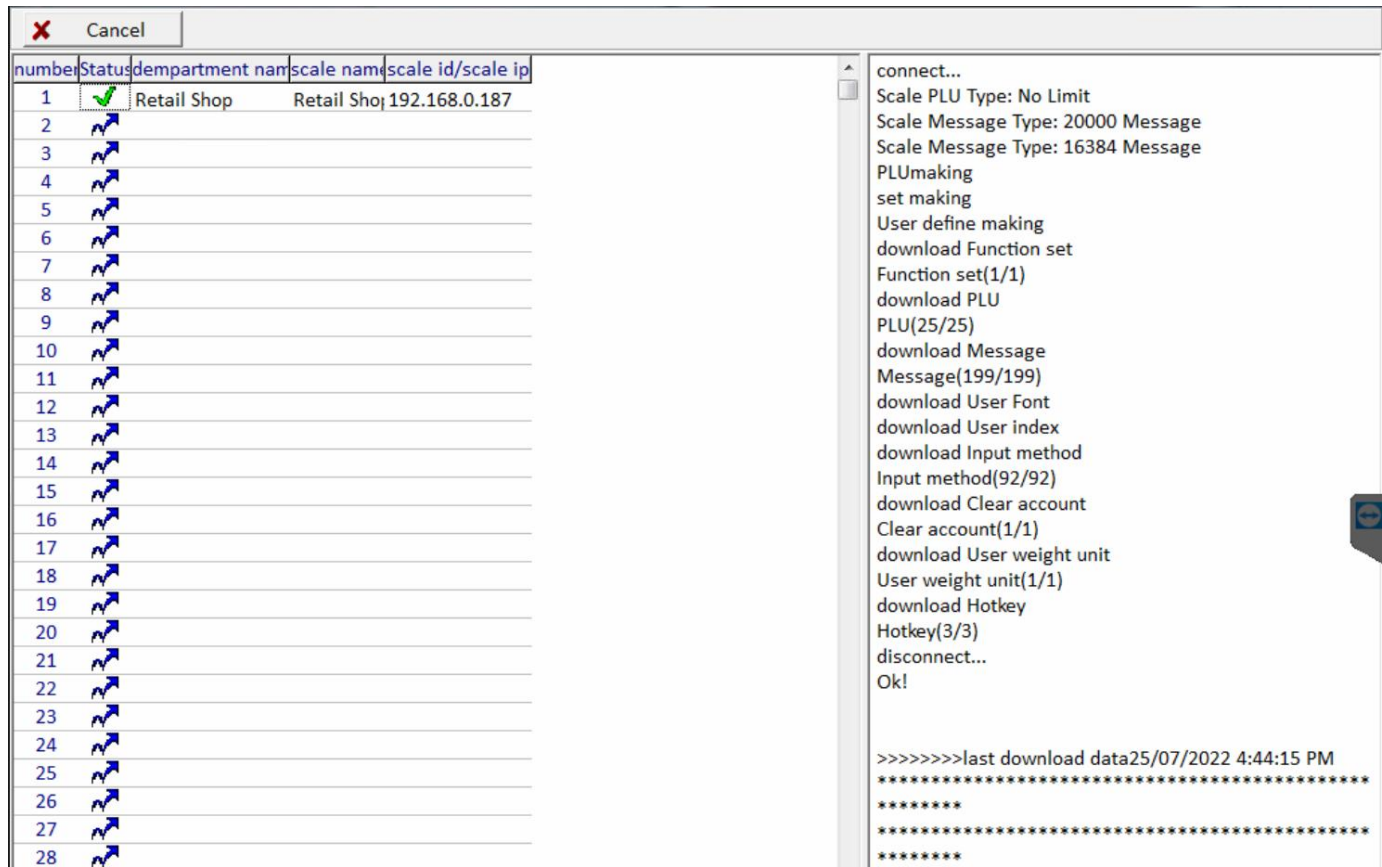
Set Exported folder C:\SQL-POS\PLU\



Click Green arrow button to Pooling latest selling price into scale Machine.
Click confirm.

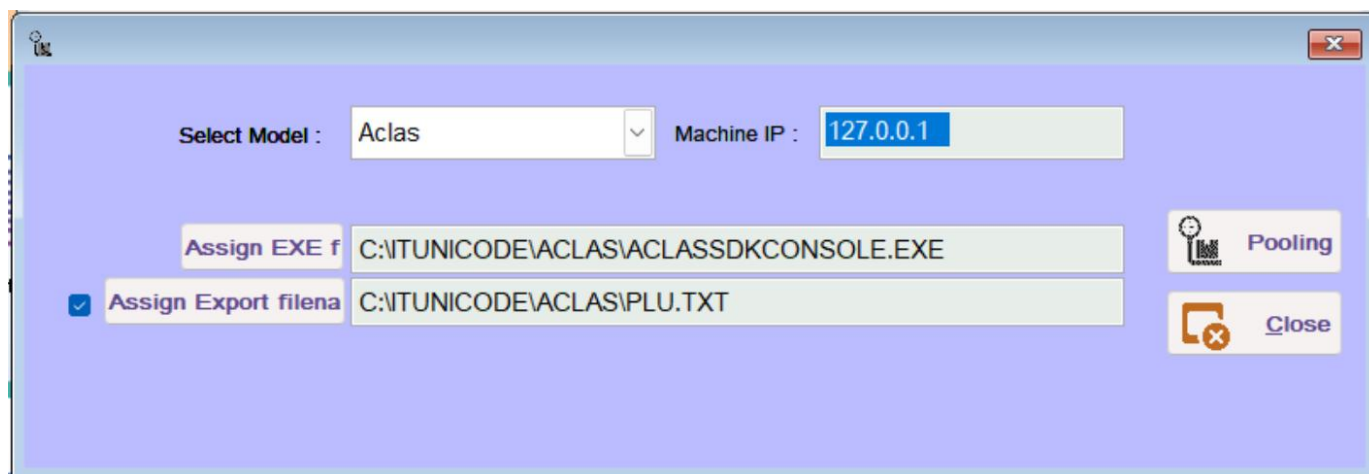


Once your see this screen, mean success update selling price into scale machine.



AClas Scale Machine

Key in your scale machine ip address



The screenshot shows a software window titled "AClas Scale Machine" with a light blue background. At the top right is a red close button with a white 'X'. Below the title bar, there are two input fields: "Select Model :" with a dropdown menu showing "Aclas" and a small downward arrow, and "Machine IP :" with a text box containing "127.0.0.1". Below these, there are two more input fields: "Assign EXE f" with a text box containing "C:\TUNICODE\ACLAS\ACLASDKCONSOLE.EXE", and "Assign Export filena" (with a checked checkbox to its left) with a text box containing "C:\TUNICODE\ACLAS\PLU.TXT". On the right side of the window, there are two buttons: "Pooling" with a clock icon and "Close" with a document icon and a red 'X'.

Select Model : Aclas Machine IP : 127.0.0.1

Assign EXE f C:\TUNICODE\ACLAS\ACLASDKCONSOLE.EXE

☒ Assign Export filena C:\TUNICODE\ACLAS\PLU.TXT

Pooling Close